



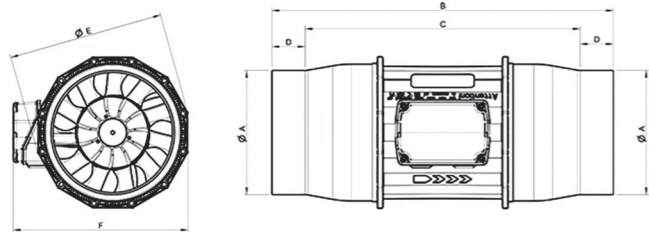
prio 150



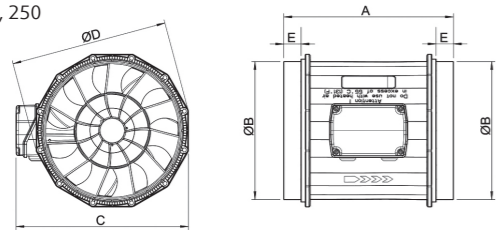
prio 200, 250

Dimensions

prio 150



prio 200, 250



Fan Model	ØA	B	C	D	ØE	F
prio 150	149	412	332	40	187	211

Fan Model	A	ØB	C	ØD	E
prio 200	245	199	249	227	25
prio 250	300	249	303	284	30

prio 150, 200, 250 - sleek, aerodynamic, straightforward.

The prio has aerodynamically optimised impellers and guide vanes and features integrated thermal contacts with manual reset to prevent the motor from overheating. Its unique composite material makes the Prio airtight minimising the transfer of sound and vibration to ductwork. Included mounting brackets make installation on walls or ceiling achievable. In addition to allowing for easy installation and removal, the mounting clamp further minimises the transfer of vibrations to ductwork.

- 25mm long spigot connections
- Airtight compact design
- Can be installed in any position
- Wall and ceiling mounting bracket included
- EC-motor is low SFP and high efficiency
- Aerodynamically optimised impellers and guide vanes
- Integrated external rotor motors
- Output control
- Integrated motor protection
- Low sound level
- Pre-wired 0-10V potentiometer included for easy commissioning
- Suitable for outdoor use when installed with weather protection

Technical data

		150	200	250	250L
Voltage	V	230	230	230	230
Frequency	Hz	50	50	50	50
Input power	W	76	117	124	0.17
Current	A	0.642	0.921	0.901	1.34
Max. temperature of transported air	°C	55	55	55	55
Sound pressure (3m)	dB (A)	57	52	48	58
Weight	kg	1.9	2.4	3.1	3.8

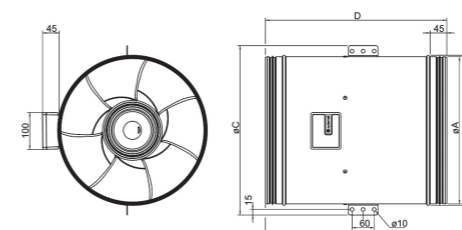


prio 315

- Circular duct fan
- Compact, aerodynamic design
- Airtight
- Integrated motor protection
- Suitable for outdoor and wet room use
- High efficiency and low SFP with a real working point
- Low sound level
- Simple to install mounting brackets included
- 0-10V potentiometer included

Dimensions

prio 315

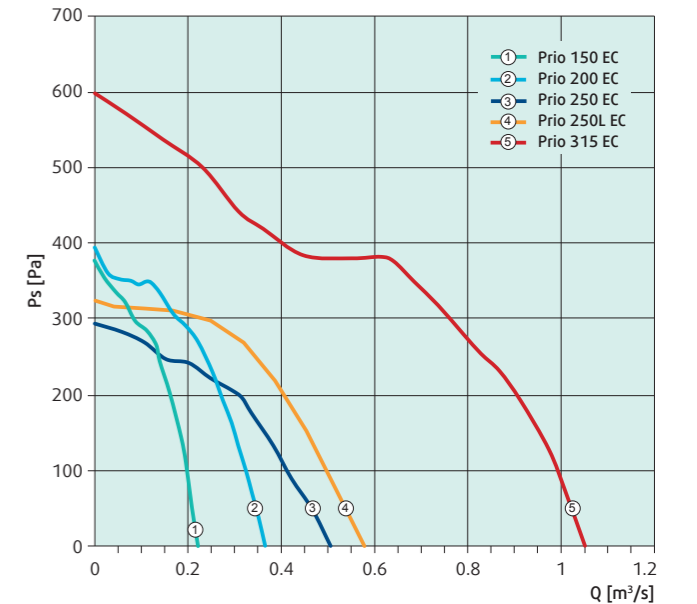


Fan Model	A	ØB	C	ØD	F
prio 315	314	322	375	407	205

prio 315 - designed for ease of installation.

The prio 315 is made from a single piece of sheet steel and features similar aerodynamic impellers as its smaller siblings. Outdoor mounting and wetroom applications are possible thanks to the fan's airtight casing and IP 55 rated terminal box. Motor protection is integrated into the electronics of the motor. The included FK mounting clamp makes installation/removal easy and prevents sound and vibration transfer to the ductwork. During commissioning, finding the desired working point is quick using the included pre-wired 0-10V potentiometer.

Performance Curve



Technical data

		315
Voltage	V	230
Frequency	Hz	50
Input power	W	528
Current	A	2.32
Max. temperature of transported air	°C	55
Sound pressure (3m)	dB (A)	64
Weight	kg	8.52