

VCV Series cowls (400-1000Ø)



VCV roof cowls are designed to provide vertical discharge exhaust for mechanical ventilation systems. Butterfly type dampers prevent rain water entry when the system is not operating. VCV models provide a range of sizes and capacities to suit almost any specification.

Construction

The range is manufactured from galvanised steel and aluminium. Metal butterfly weather shields are air operated.

Features

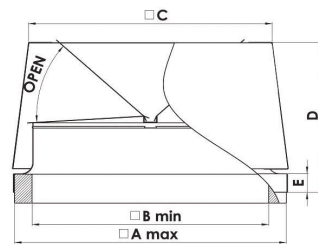
- Can be mounted at angles of up to 30°
- Durable construction
- Smoke spill compatible
- Available in optional Colorbond™ colours.

Application Notes

Vertical discharge cowls should only be used where exhaust air velocities are sufficient to prevent rain ingress during operation. For low air velocity applications refer to VCQ horizontal discharge cowls. In high wind speed locations, the use of magnetic catches is highly recommended.

Data

Refer to the latest product datasheet for individual model specification. Datasheets are available from our electronic selection software **FansSelect** downloadable at www.pacificHVAC.com

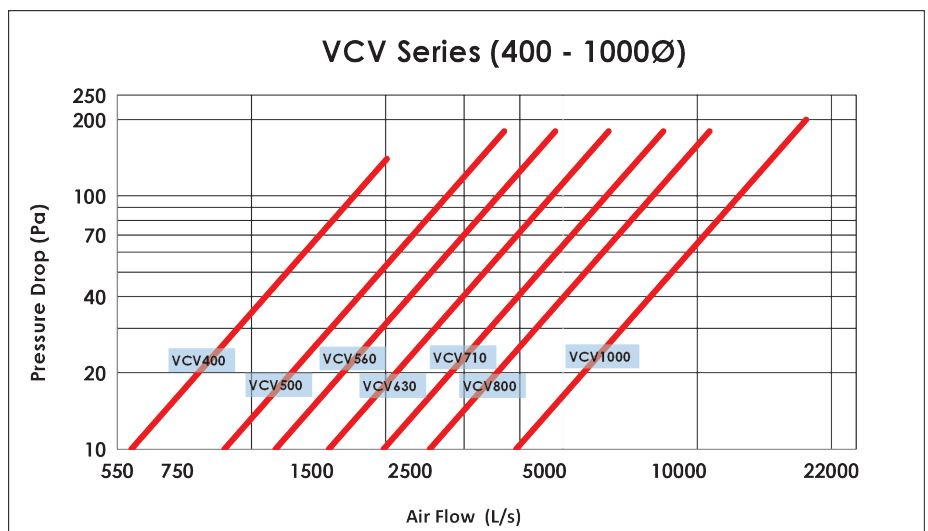


Suggested Specification

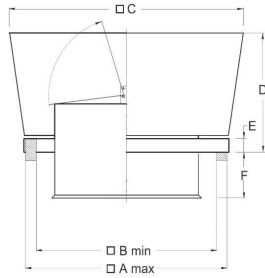
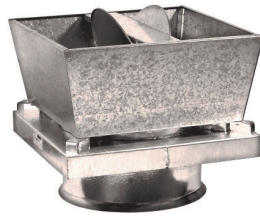
Air Relief Cowls shall be of the VCV Series manufactured by Pacific HVAC Engineering. Cowls shall be constructed from aluminium and galvanised or powder coated steel.

VCV	A	B	C	D	E	Kg
400	530	440	472	313	50	20
500	645	545	557	443	80	26
560	715	615	628	443	80	30
630	795	695	690	513	80	35
710	840	740	777	516	80	40
800	960	810	816	635	80	55
1000	1160	1010	1034	637	80	70

Ancillaries



VCV Series cowls (1120-1500Ø)



Size	A	B	C	D	E	F	Kg
VCV1120	1420	1270	1340	770	80	815	125
VCV1250	1550	1400	1560	920	80	770	180
VCV1400	1750	1550	1830	920	80	815	365
VCV1500	1850	1650	1830	920	80	815	380

