

Magnetic catches (mag-lock)



Magnetic Catches for butterfly damper roof fans and cowls

Mag-lock catches are used to prevent butterfly dampers opening in windy conditions when fans or cowls are required to stay closed (fan or system off).

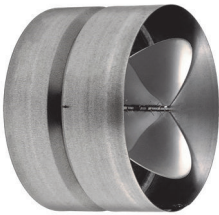
Construction

Manufactured from corrosion resistant steel and aluminium.

Lock strength

Fully adjustable up to 7kG.

Non return dampers

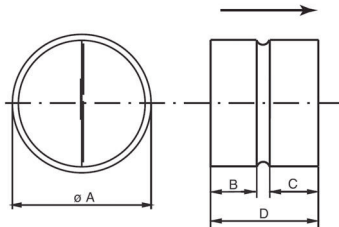


RSK-Non Return Damper for circular fan and duct applications

RSK's are butterfly type dampers designed to provide an effective back draft seal in ducted systems. These dampers can be installed either vertically or horizontally.

Construction

Cases are fabricated from roll formed galvanised sheet. Butterfly elements are made from lightweight aluminium sheet held in the closed position with low resistance steel springs.



Part	A	D	B	C
RSK125	125	100	33	44
RSK150	150	100	34	43
RSK200	200	140	55	62
RSK250	250	140	54	62
RSK315*	315	140	60	55

* May be used with RED315-300 Reducer for use with 300mm fans and ducts.

