

Inlet cones

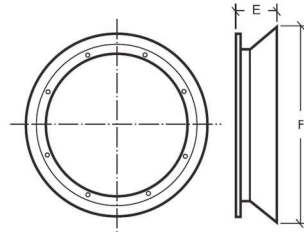


CICGD

Inlet Cones for all AX/AT/AC/AY/AZ/AB Series Fans

Manufactured from heavy gauge galvanised steel with a single bolted flange. Standard accessory losses (k) 0.38 $Pressure\ drop\ (Pa) = 0.6 \times k \times Velocity^2\ (m/s)$ **Note: Cone flange holes match fan cases and flanges.**

Coding: CIC = Inlet Cone without Mesh Guard
CICGD = Inlet Cone with Mesh Guard



Fan Size	E	F	kg
315	93	405	2
400	103	490	3
450	110	545	4
500	118	605	5
560	93	680	6
630	104	765	9
710	117	855	11
800	130	950	13
900	150	1060	20

Fan Size	E	F	kg
1000	165	1170	23
1100	188	1375	32
1200	210	1545	40
1400	230	1750	45
1500	255	760	48
1600	265	1900	-
1800	300	2100	-
2000	340	2340	-

Guards

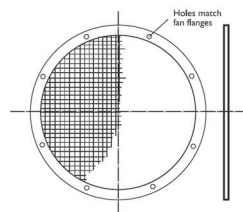


CGDGUARD

CGD Guards

Manufactured from heavy gauge zinc plated steel mesh. Standard accessory losses (k) 0.75 $Pressure\ drop\ (Pa) = 0.6 \times k \times Velocity^2\ (m/s)$

Coding: CGD = Circular Cut Out Mesh Guard - Without Flange.
CGDGUARD = Mesh Guard - With Flange



Fan Size	kg
315	0.5
400	1.5
450	1.7
500	2.3
560	2.8
630	3.2
710	3.7
800	4
900	7

Fan Size	kg
1000	7
1100	8
1200	8
1400	10
1500	13
1600	15
1800	18
2000	20