

## Magnetic catches (mag-lock)



### Magnetic Catches for butterfly damper roof fans and cowls

Mag-lock catches are used to prevent butterfly dampers opening in windy conditions when fans or cowls are required to stay closed (fan or system off).

#### Construction

Manufactured from corrosion resistant steel and aluminium.

#### Lock strength

Fully adjustable up to 7kG.

## Non return dampers

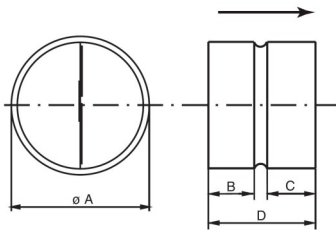


### RSK-Non Return Damper for circular fan and duct applications

RSK's are butterfly type dampers designed to provide an effective back draft seal in ducted systems. These dampers can be installed either vertically or horizontally.

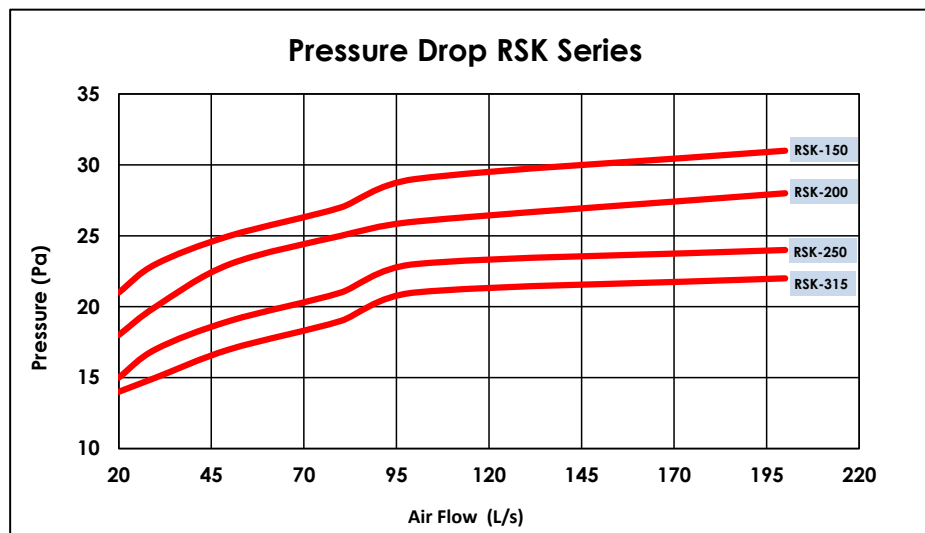
#### Construction

Cases are fabricated from roll formed galvanised sheet. Butterfly elements are made from lightweight aluminium sheet held in the closed position with low resistance steel springs.



Part	A	D	B	C
RSK125	125	100	33	44
RSK150	150	100	34	43
RSK200	200	140	55	62
RSK250	250	140	54	62
RSK315*	315	140	60	55

\* May be used with RED315-300 Reducer for use with 300mm fans and ducts.



## Non return dampers - DND Series



### DND Series - drop in non return dampers

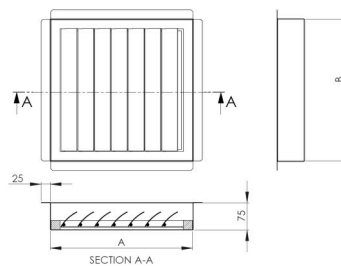
DND's are shutter type dampers designed to provide an effective back draft seal when used in conjunction with roof mounted fans. The flanged design allows the damper to be mounted as a 'drop in' part inside kerbed up-stands.

### Construction

Flaps are fabricated from extruded PVC. Frames and flanges are fabricated from anodised aluminium with polymer corner joints.

### Damper Selection

To select dampers for specific fans refer to **FansSelect** our electronic selection software available for download at [www.fansdirect.com.au](http://www.fansdirect.com.au). Dampers are selectable as ancillaries.



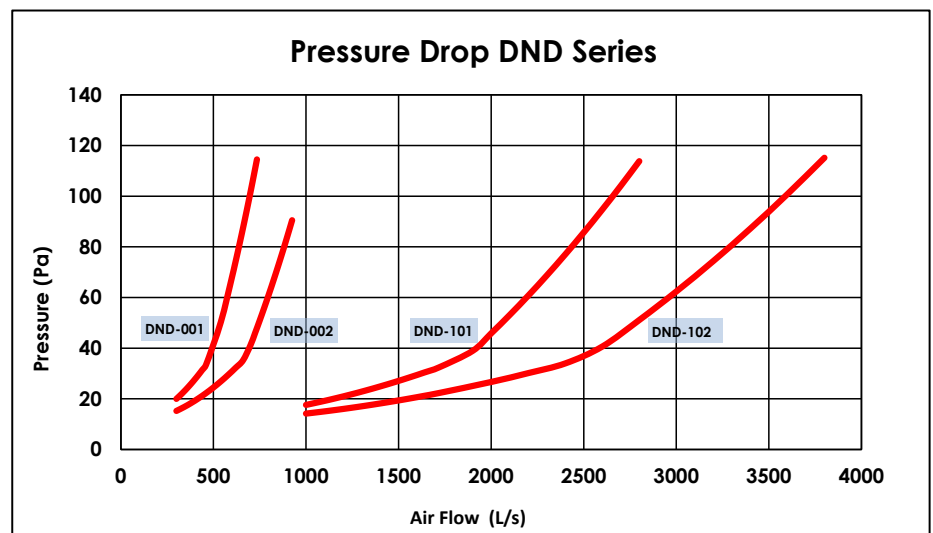
### Dimensions

Part	A	B
DND-001	344	344
DND-002	394	394
DND-003	457	457
DND-004	499	499
DND-005	544	544
DND-006	605	605
DND-007	696	696
DND-008	760	760
DND-010	1040	1040
DND-101	615	615
DND-102	705	705

### Roof Fan Quick Reference

Fan	Size	DND
RCV / RCD	355 - 400	DND-002
RCV / RCD	450 - 500 - 560	DND-101
RCV / RCD	630 - 710	DND-102

**Note** that DND series dampers are not suitable for use with kitchen exhaust systems.



## Non return dampers - NRD Series



### NRD-Non Return Damper for rectangular or square fan and duct applications

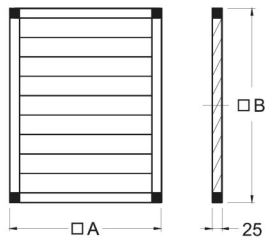
NRD's are shutter type dampers designed to provide an effective back draft seal in ducted systems. These dampers can be installed either vertically or horizontally.

#### Construction

Flaps are fabricated from extruded PVC. Frames are fabricated from anodised aluminium with polymer corner joints.

#### Damper Selection

Standard sizes are listed in the table below to allow selections for insertion into duct systems. To select dampers for specific fans whether duct or roof mounted, refer to **FansSelect** electronic selection software available for download at [www.pacificHVAC.com](http://www.pacificHVAC.com).



#### Dimensions

Part	A	kg
NRD-110	408	0.8
NRD-111	448	1.2
NRD-112	498	1.4
NRD-113	548	1.7
NRD-114	648	2
NRD-115	698	2.6
NRD-116	798	2.7
NRD-117	898	3.1
NRD-118	998	5.2

#### Duct Fan Quick Reference

Fan	Size	NRD
ICQ / IMQ	280 - 315	NRD-110
ICQ / IMQ	355	NRD-111
ICQ / IMQ	400	NRD-112
ICQ / IMQ	450	NRD-113
ICQ / IMQ	500	NRD-114
ICQ / IMQ	560	NRD-115
ICQ / IMQ	630	NRD-116
ICQ / IMQ	710	NRD-117
ICQ / IMQ	800	NRD-118

**Note** that NRD series dampers are not suitable for use with kitchen exhaust systems.

