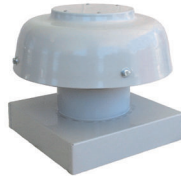


BRCR / BRCC Series - roof centrifugal Bushfire Compliant



BRCR Tube Mount



BRCC Curb Mount

BRCR

The BRCR / BRCC range of roof mounted fans is designed for ventilation applications including domestic kitchen hood extraction where lowest possible noise levels are required. The fans meet the requirements of **AS 3959-2009** up to BAL-40.

Construction

The range is fitted with backward curved centrifugal impellers driven by external rotor motors with sealed for life bearings. External components are made from corrosion protected powder coat steel. Ember penetration is prevented with stainless steel mesh with a maximum aperture of 2mm. Available in optional Colorbond™ colours.

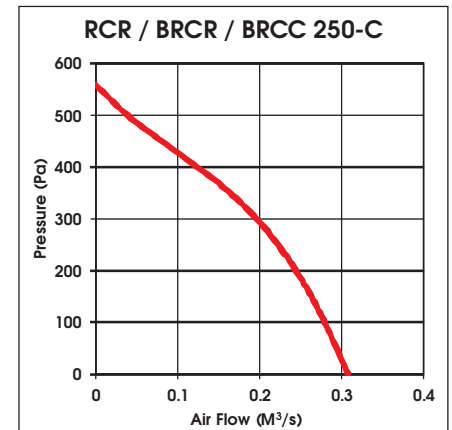
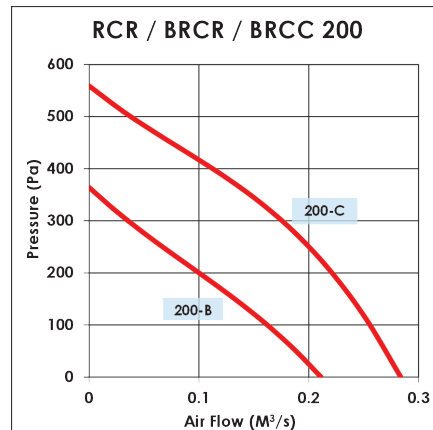
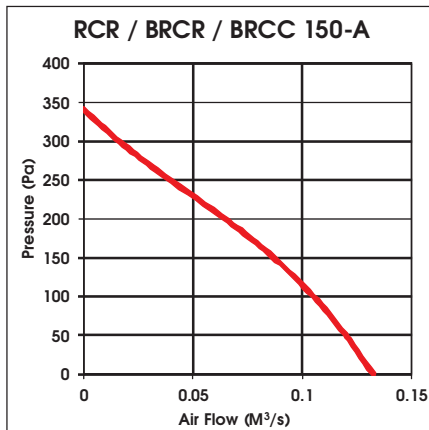
Fans are available in tube mount or curb mount configuration.

Testing

Rated fan performance has been determined by testing to ISO 5801 : 2007. Fan sound data has been determined by testing to ISO 13347 : 2004.

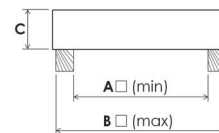
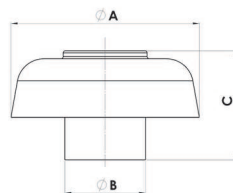
Wiring

Three pin plug. Datasheets are available from our electronic selection software **FansSelect** downloadable at www.pacificHVAC.com



Suggested Specification

Bushfire Code Compliant (to maximum BAL-40) Roof Centrifugal Exhaust type fans shall be of the BRCR or BRCC Series manufactured by Pacific HVAC Engineering. Backward curved impellers shall be driven by external rotor motors with sealed for life bearings. All fans shall be fully tested in accordance with the requirements of ISO 5801 : 2007 for air flow and ISO 13347 : 2004 for sound. Ember penetration shall be prevented by the installation of stainless steel mesh with a maximum aperture of 2mm. The fans shall meet the design requirements of AS3959-2009 up to BAL-40



BRCR				
Size	A	B(I/D)	C	kg
150	300	150	220	3.2
200	400	200	240	5.2
250	500	250	260	5.7

BRCC Curb Base			
Size	A	B	C
150	170	240	55
200	270	340	55
250	345	395	55

Note: Add dimension 'C' Curb Base to fan Dimension 'C' for overall assembly height.

Fan Model	RPM	Voltage	Amps	kW	Sound Power Spectrum dB referred to 10 ⁻¹² watts								
					63	125	250	500	1K	2K	4K	8K	dB(A) @ 3m
BRCR/BRCC150-A	2350	240	0.23	0.052	64	65	60	57	56	54	49	45	40
BRCR/BRCC200-B	2600	240	0.38	0.085	82	80	74	68	65	65	59	55	51
BRCR/BRCC200-C	2500	240	0.68	0.155	79	77	67	65	62	62	56	52	48
BRCR/BRCC250-C	2500	240	0.68	0.165	79	77	67	65	62	62	56	52	48