

ICP - FloMaster Series inline centrifugal



ICP

The FloMaster series offers high performance ventilation in medium to high demand systems. Suitable for a wide range of uses including general commercial and domestic ventilation as well as horticulture and hydroponics

Construction

The range is fitted with backward curved centrifugal impellers driven by external rotor motors with sealed for life bearings. Cases are made from injection moulded polymer.

Features

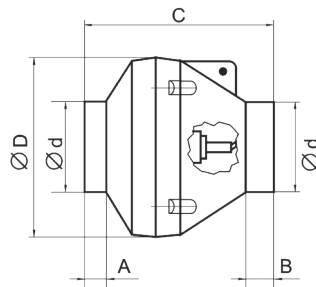
Speed controllable.
Fans can be mounted at any angle.
Includes mounting brackets.
High efficiency balanced impellers

Testing

Rated fan performance has been tested in accordance with the requirements of ISO 5801 : 2007. Fans sound data has been determined by testing to ISO 13347 : 2004.

Wiring

Fans are fitted with flex leads and plugs.



Suggested Specification

Circular profile polymer cased centrifugal type fans shall be of the ICP -FloMaster Series supplied by Pacific HVAC Engineering. Backward curved impellers shall be driven by external rotor motors with sealed for life bearings. . Fan cases shall be of impact resistant ABS polymer. All fans shall be fully tested in accordance with the requirements of ISO 5801 : 2007 for air flow and ISO 13347 : 2004 for sound.

Fan Model	d	D	C	A	B	kg
ICP 100	100	250	230	27	31	2.15
ICP 125	123.5	250	220	27	32.5	2.2
ICP 150	150	300	286	30	32.5	2.6
ICP 200	200	340	276	30	30	4
ICP 200Z	200	340	276	30	30	4.3
ICP 250	250	340	264	30	30	4.5
ICP 315	315	400	276	40	40	5.1
ICP 315Z	315	400	276	40	40	5.2

Fan Model	Full Load Current	Motor kW	Shaft Revs /sec	dB(A) @ 3m	SPL dB referred to 10 ⁻¹² W						
					63	125	250	500	1K	2K	4K
ICP100	0.34	0.08	47	46	70	69	63	60	59	54	50
ICP125	0.34	0.079	47	46	70	69	63	60	59	54	50
ICP150	0.35	0.08	45	46	70	69	63	60	59	54	50
ICP200	0.47	0.107	44	48	72	71	65	62	61	56	52
ICP200Z	0.76	0.173	35	51	75	74	68	65	64	59	55
ICP250	0.76	0.173	35	50	74	73	67	64	63	58	54
ICP315	0.88	0.2	44	50	74	73	67	64	63	58	54
ICP315Z	1.36	0.31	43	53	77	76	70	67	66	61	57

ICP - FloMaster Series inline centrifugal

Ancillaries

